

SLIEMA PENTHOUSE WITH URBAN VIEWS

A beautifully finished four-bedroom penthouse in the prestigious Falcon House, Sliema, available for rent from October 2026.

📍 FALCON HOUSE, BLOCK E,
SLIEMA



LOCATION & CONNECTIVITY

LUXURY LIVING IN THE HEART OF SLIEMA

Situated in the heart of Sliema, this exceptional penthouse enjoys one of Malta's most sought-after residential addresses, moments from the seafront, vibrant cafés, boutique shopping and everyday conveniences. Combining urban energy with refined living, Falcon House offers the very best of contemporary city living.



- **SLIEMA PROMENADE** 8 min
- **THE POINT SHOPPING MALL** 10 min
- **LOCAL CAFÉS** 10 min
- **FOND GHADIR BEACH** 10 min
- **FAST FERRY TO GOZO** 15 min
- **EXILES BEACH** 20 min

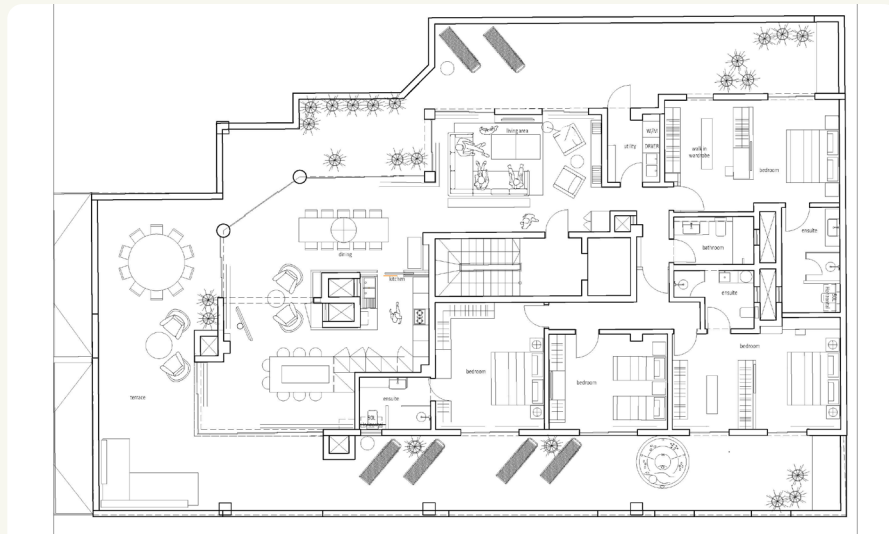


- **ST GEORGE'S BAY** 10 min
- **BALLUTA BAY** 10 min
- **VALLETTA** 15 min
- **MDINA** 20 min
- **AIRPORT** 25 min
- **GOLDEN BAY** 30 min

PROPERTY OVERVIEW

- TOTAL AREA: **231 sq.m**
- INTERNAL AREA: **131 sq.m**
- EXTERNAL AREA: **100 sq.m**
- 4 BEDROOMS
- 4 BATHROOMS
- LAUNDRY ROOM
- FULLY AIR CONDITIONED
- FULLY EQUIPPED KITCHEN
- ONE-CAR LOCK-UP GARAGE
- PRIVATE TERRACE WITH JACUZZI
- ACCESS TO PRIVATE OUTDOOR LANDSCAPED GARDENS

PROPERTY AT A GLANCE



LIVING &
ENTERTAINING

DESIGNED FOR EXCEPTIONAL LIVING



Generous open-plan living and dining spaces extend effortlessly onto a private terrace with jacuzzi, creating an exceptional setting for relaxed everyday living and elegant entertaining.



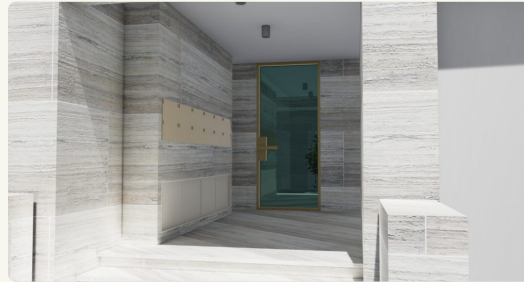
Key Highlights

- OPEN-PLAN LAYOUT
- ELEGANTLY FURNISHED INTERIORS
- INDOOR-OUTDOOR CONNECTION
- ABUNDANT NATURAL LIGHT
- PRIVATE TERRACE WITH JACUZZI

INTERIORS



INTERIORS & EXTERIORS



OUTDOOR LIFESTYLE

The expansive terrace elevates everyday living, offering refined spaces for dining and entertaining alongside a private jacuzzi designed for complete relaxation.

OUTDOOR SPACES FOR EVERY OCCASION



Key Highlights

- 100 SQ.M EXTERNAL SPACE
- OUTDOOR JACUZZI
- AL FRESCO DINING AREAS
- LOUNGE TERRACES
- ACCESS TO PRIVATE GARDENS

LEASING TERMS

A DISTINCTIVE SLIEMA PENTHOUSE

- TOTAL RENTABLE AREA **231 sq.m**
- RENTAL RATE **€28.14 per sq.m per month**
- ANNUAL RENT **€78,000 per annum**
- MONTHLY RENT **€6,500 per month**

Available for long-term lease, subject to a minimum commitment of 12 months.

Available from October 2026.



GET IN TOUCH

AVAILABLE FOR PRIVATE VIEWING

Renzo Vella

Property Manager

T: +356 7934 0880

E: renzo.vella@axgroup.mt

Contact us today